

Solution Offering

- EliteAAA
- Service Selection Portal
- Policy Manager
- Captive Portal
- CRESTEL Real time Rating & Charging

Offering On Demand Services on a WiMAX Network

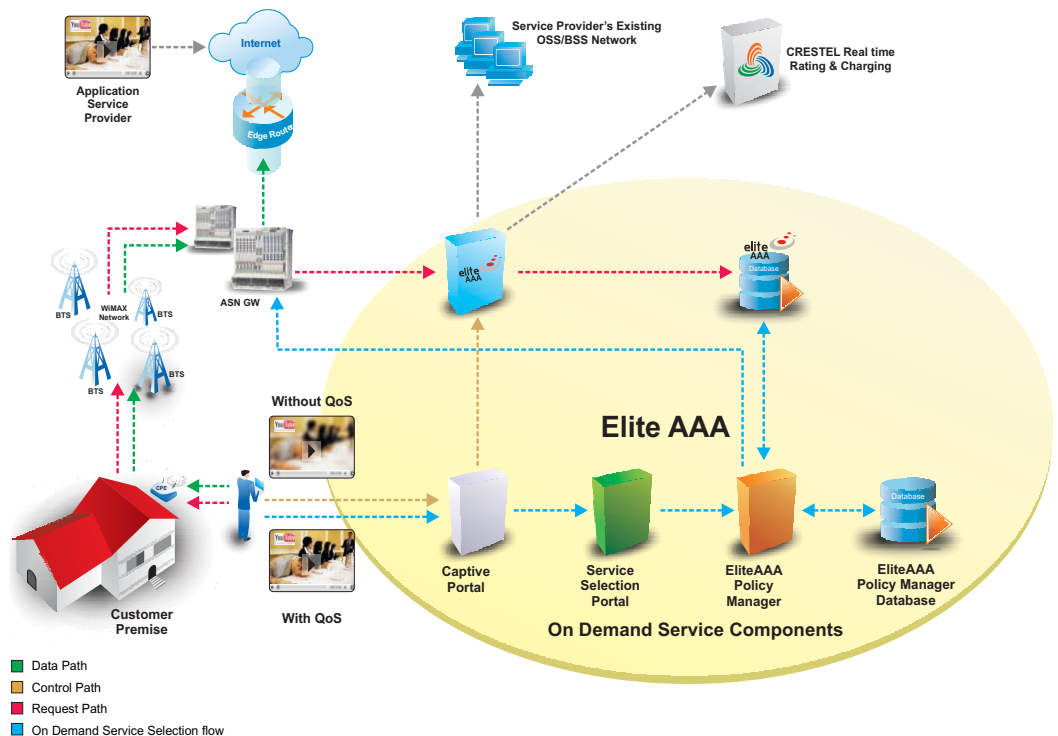
On-demand services are increasingly becoming commonplace as a means of optimizing cost, increasing efficiency and improving subscriber experience. This is true for WiMAX networks where operators are launching on demand services to derive new revenue streams by offering data services to roaming customers instantly who would not typically subscribe regular monthly subscription plans but they want temporary bandwidth boosts without being tied to any plan and also offering on Demand services as premium service to postpaid subscribers.

Offering Bandwidth on-demand on WiMAX networks can enable operators accommodate more subscribers in the same bandwidth, ensure optimal utilization of their network, and hence maintain their margins despite competitive pricing. The ability to transform flat fee structure of service offering to “pay-per-usage” model using dynamic bandwidth allocation also increases the average revenue per user (ARPU) significantly.

The key factors to success of Bandwidth on Demand service in WiMAX networks are offering QoS based on service and application per subscriber level, Network monitoring & management, Subscriber service activation and provisioning.

Elitecore offers a one-stop solution for Network management and subscriber self service management with which subscribers can be initially provisioned with the basic bandwidth requirement and then allow them to avail bandwidth on demand for resource-covetous applications in tandem with defined QoS and other network functions such as traffic management & content filtering. Elitecore's Policy Manager helps regulate bandwidth requests to avoid traffic bottlenecks, while being able to view all bandwidth allocations to users at any time. Subscribers benefit tremendously as they get the appropriate bandwidth whenever they want and pay as per usage.

Elitecore Solution for On Demand Service on a WiMAX Network



Features & Benefits

- Easy & Faster Rollout of On Demand Services WiMAX Subscriber
- Differentiate the price sensitive consumer segment
- Easily integrates with existing OSS/ BSS & Back office robust architecture provides High Availability and Failover Capability
- Support Disaster Recovery Implementation
- Scalable and Modular in Design
- Can be used as standalone does not come in control path of billing solution and so cause no hindrance to existing network and its performance.
- Act as one point solution to implement on-demand bandwidth controller irrespective of different components used in ISP network to manage bandwidth
- Support the Protocol like LDAPv3 (RFC 2251/2252/2253), RADIUS (RFC 2138/2139), HTTP 1.0 & 1.1 (RFC 1945, RFC 2616), Security, Radius authentication/authorization (PAP/CHAP).
- Support standard interfaces like RMI, SOAP, LDAP, and RADIUS

EliteAAA

- EliteAAA supports the RADIUS protocol
- EliteAAA supports the EAP TLS, EAP TTLS and EAP MD5
- EliteAAA supports the Pre-provisioning of the QoS based on Service or Application wise
- RADIUS Policy defines at the Driver level, System level, Rate plan level and Account level for Authenticating and Authorizing the subscriber
- Proxy Forwarding based on Realm, ANI and DNIS support
- Integrate with any Rating, Charging and Billing product
- Centralized database to Authenticate WiMAX subscriber

Policy Manager

Policy / Profile Manager

- Enforce rule based policy based on time, Duration for prepaid User
- Centralized Policy Database to manage Subscriber Live Session Data
- Policy Decision Function and Enforcement of correct Rule based on Service and Application for each Subscriber

Network Repository Manager and controller

- Dynamically Manage Network Resources based on Service, Subscriber or Usage
- Does the Resources Reservation and Monitoring for On Demand Service Request Can Monitor Contention rates in the Network per Class of service
- Provide the Resource Admission Control to prevent contention of Network Bandwidth in order to preserve the performance

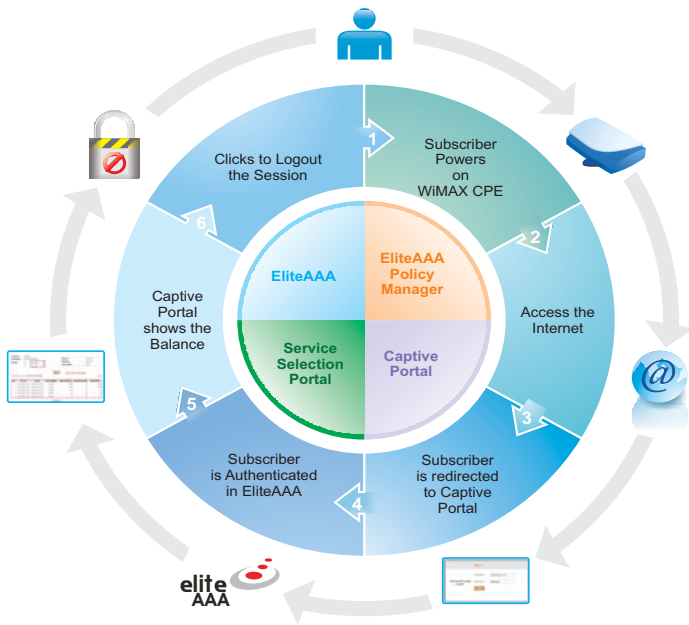
Bandwidth Controller

- Dynamically Allocate Bandwidth and Quality of Service based on Service and Subscriber
- Optimized Tiered Bandwidth and Access Network Resources at each Access Network Level

Session Broker Agent

- Provides live session information required for current network usage
- Dynamic information required by policy and network controller
- J2EE based Scalable Platform and high load tolerant architecture
- Support bulk provisioning & Real time Provisioning for On Demand Service

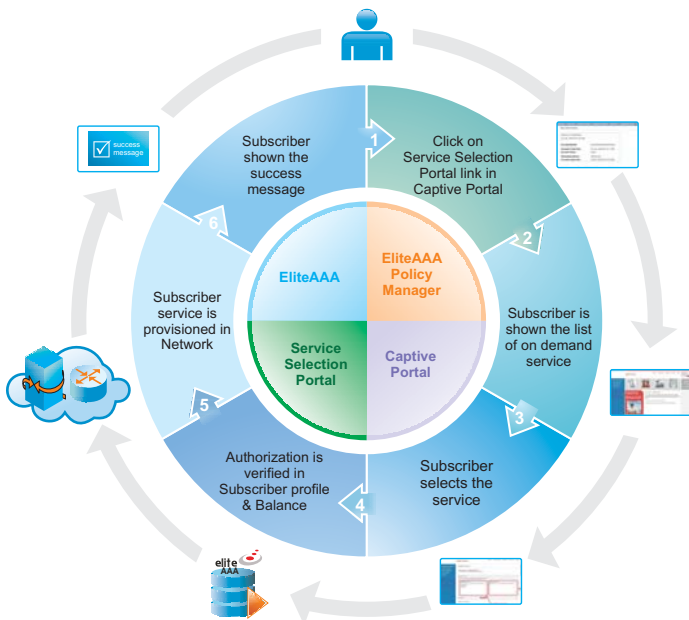
Subscriber Login Flow



Captive Portal

- Customized Administrator & User login Template for Pre and Post login
- Dynamically shows the user balance with remaining time and data
- Administrator can add promotional advertisements and introduce new websites to the customers with the help of images and URLs.
- Easy access to change or update the service with the help of links
- No Integration required with ASN Gateway

Subscriber On Demand Service Selection Flow



Service Selection Portal

- Dynamic Service Selection Portal shows the personalized service selection option for self subscription via web
- Subscriber can easily change the service from Service Selection Portal
- Web portal shows the Subscriber's Location specific content easily integrates with EliteAAA RADIUS Server and Policy Manager
- Customized Advertisement Area, dynamic with subscriber's location
- Service Provider can add external URL s for redirection

About Elitecore Technologies Ltd.

Elitecore Technologies is the provider of CRESTEL - Billing Revenue Management & EliteAAA - Core Network Session Control Software to enable Next Generation Voice, Video & Data Services offered by Tier-1 to Tier 3 Telecom operators / service providers over Wireline or Wireless Networks offered directly and through distribution channels. Elitecore serves customers across the globe with presence in more than 75 countries and is a Carlyle invested company-The Carlyle Group is a global private equity firm with USD 84.5 billion under its management. For more information, visit Elitecore Technologies Ltd. at www.elitecore.com



Corporate Office

Elitecore Technologies Ltd.
904, Silicon Tower, Off. C.G.
Road, Ahmedabad - 380 006.
INDIA.
Tel: +91-79-66065606,
Fax: +91-79-26407640

Sales & Marketing

Mumbai Tel: +91-22-66951280 / 1380 Fax: +91-22-66923363
Delhi Tel: +91-11-41589761/62 Fax: +91-11-41589760
Bangalore Tel: +91-80-41517880 / 81 Fax: +91-80-41517883
USA New Jersey Tel: 201-422-9200 Fax: 201-735-5888
Bahrain Tel: +97316199249 Fax: +973-16-500-501
Toll Free: 1-800-301-00013